



*Canadian Graduate and Professional  
Student Survey  
2016 Results*

*Prepared by the Office of Institutional Research and Analysis*

*Section 1 – Project Summary*

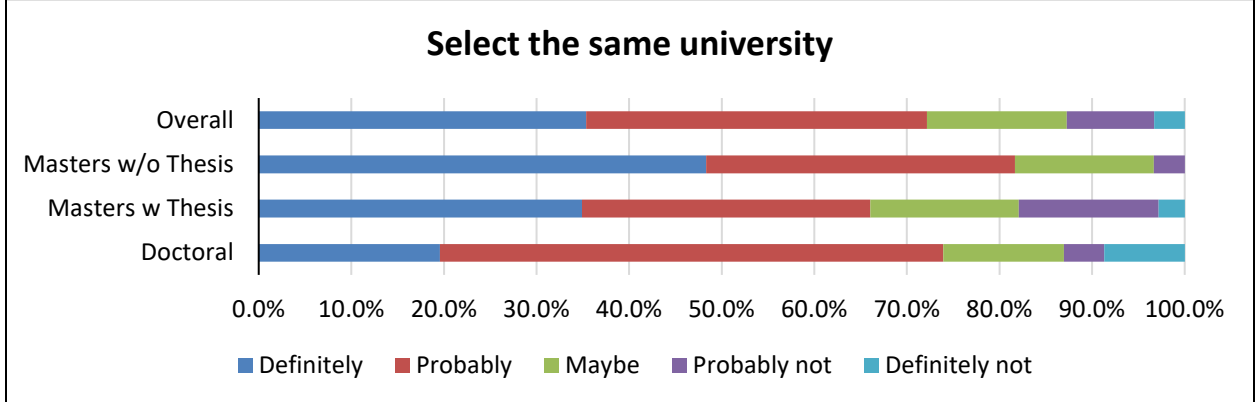
Project Summary	Totals
Number of students invited to participate	632
Responses received (partially or totally completed)	212
Response Rate	33.5%
Survey Open Date	28-Mar-16
Survey Close Date	7-May-16

*Section 2 – Student Demographics*

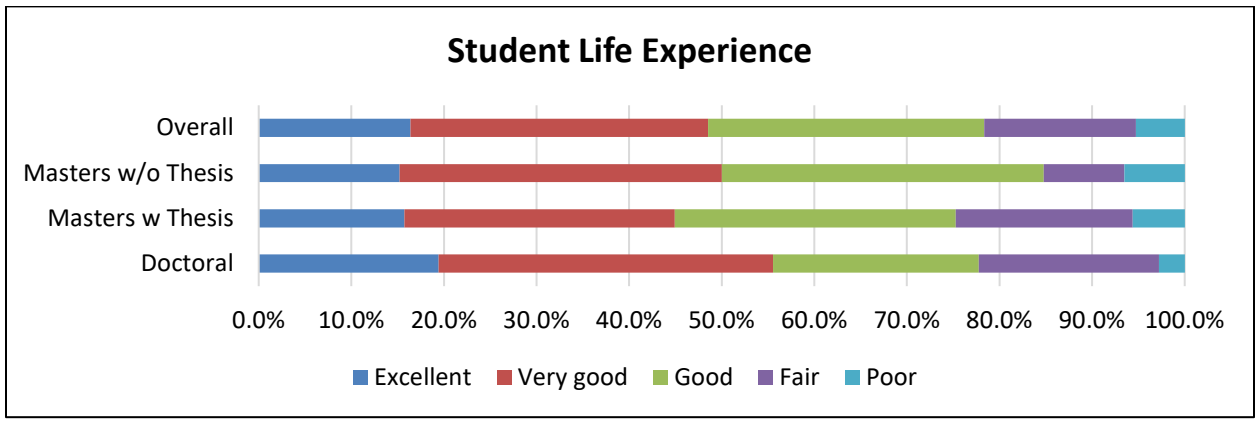
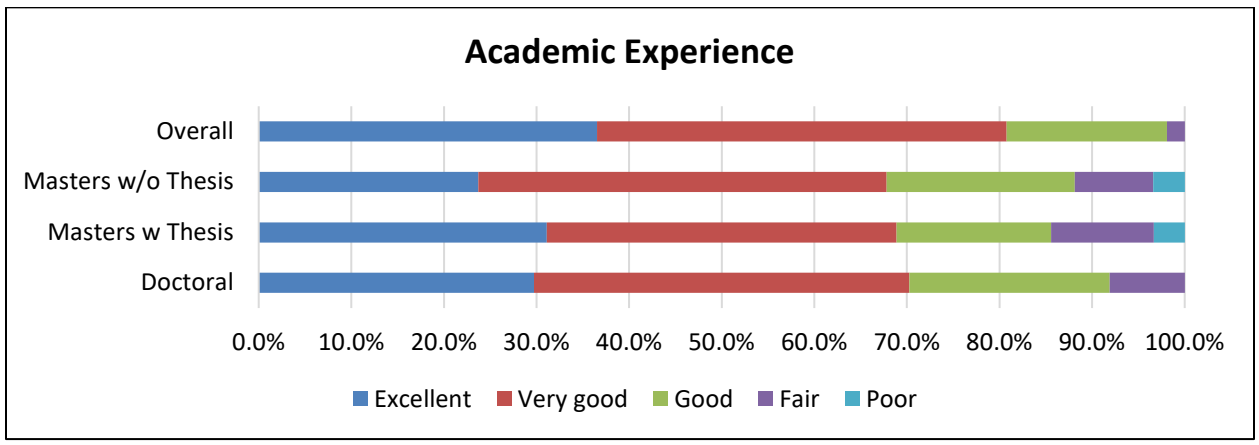
	Doctoral		Masters w Thesis		Masters w/o Thesis		Overall	
	Frequency	Count	Frequency	Count	Frequency	Count	Frequency	Count
<b>Gender</b>								
Male	70.3%	26	62.2%	56	40.0%	20	57.6%	102
Female	29.7%	11	37.8%	34	60.0%	30	42.4%	75
<b>Age</b>								
<=25	5.41%	2	56.0%	51	20.0%	10	35.4%	63
>25	94.6%	35	44.0%	40	80.0%	40	64.6%	115
<b>Marital Status</b>								
Married	70.3%	26	23.3%	21	54.9%	28	42.1%	75
Single	29.7%	11	76.7%	69	39.2%	20	57.9%	103
<b>Dependents</b>								
None	59.5%	22	81.1%	73	58.8%	30	70.2%	125
1 or more	40.5%	15	18.9%	17	41.2%	21	29.8%	53
<b>Citizenship</b>								
Canadian/Permanent Residence	59.5%	22	82.4%	75	86.3%	44	78.8%	141
International	40.5%	15	17.6%	16	13.7%	7	21.2%	38
<b>Academic Load</b>								
Full-Time	95.7%	44	84.0%	89	36.7%	22	73.1%	155
Part-Time	4.3%	2	16.0%	17	63.3%	38	26.9%	57
<b>Degree</b>								
Social Sciences	0.0%	0	5.7%	6	0.0%	0	2.8%	6
Business/Management	0.0%	0	1.0%	1	0.0%	0	0.5%	1
Education	0.0%	0	5.7%	6	70.0%	42	22.7%	48
Engineering	76.1%	35	39.0%	41	16.7%	10	40.8%	86
Physical and Mathematical Sciences	6.5%	3	14.3%	15	0.0%	0	8.5%	18
Biological Sciences	8.7%	4	3.8%	4	0.0%	0	3.8%	8
Health Science	6.5%	3	27.6%	29	0.0%	0	15.2%	32
Arts & Culture	0.0%	0	0.0%	0	0.0%	0	0.0%	0
Finance/Mathematics/Computing	0.0%	0	0.0%	0	5.0%	3	1.4%	3
Other	0.0%	0	0.0%	0	8.3%	5	2.4%	5

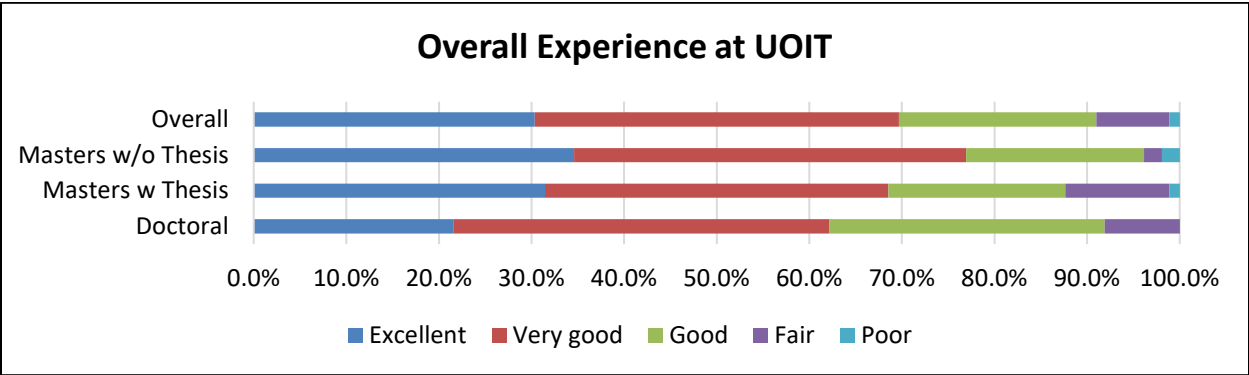
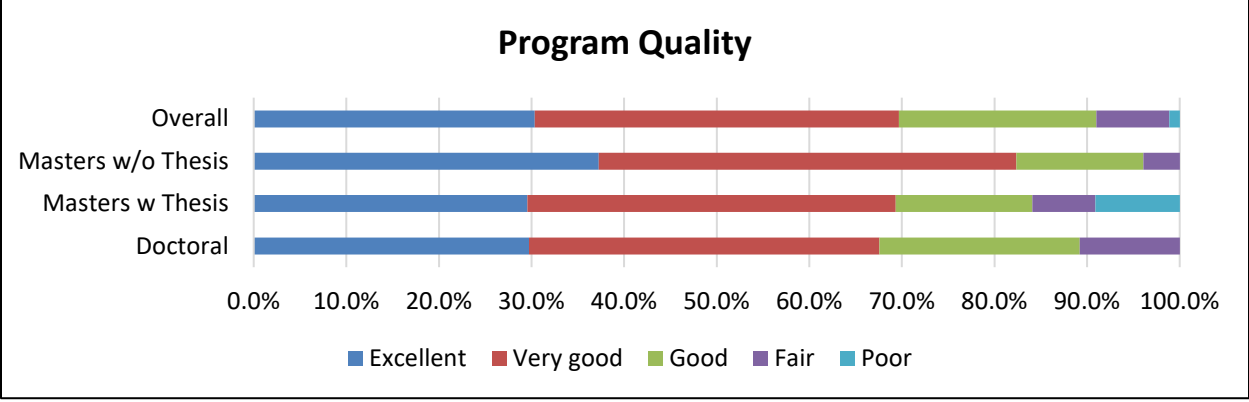
Section 3 – Overall Satisfaction

If you were to start your graduate/ professional career again, would you select this same university?

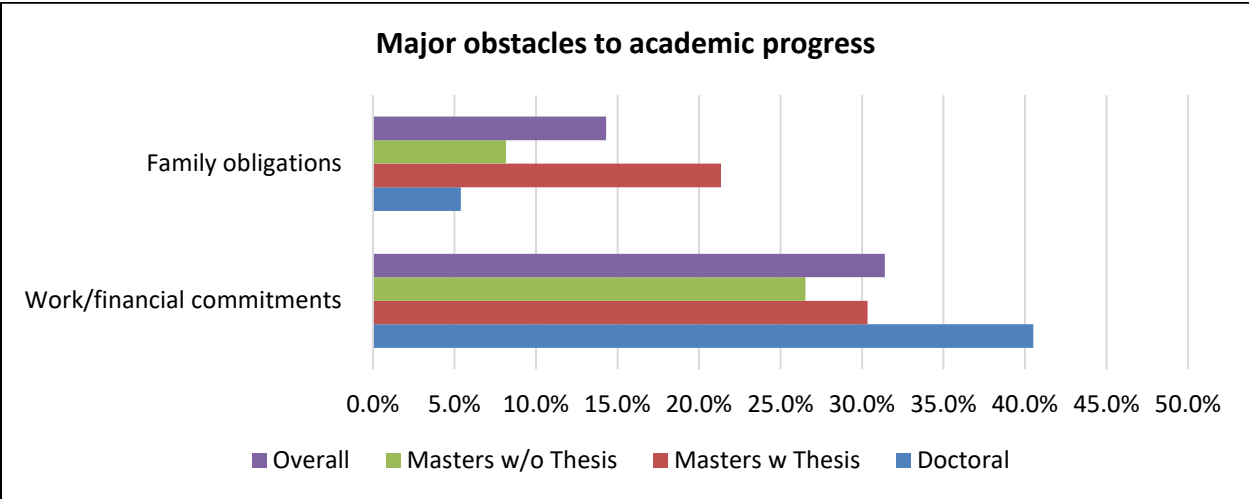


Overall, how would you rate the quality of:



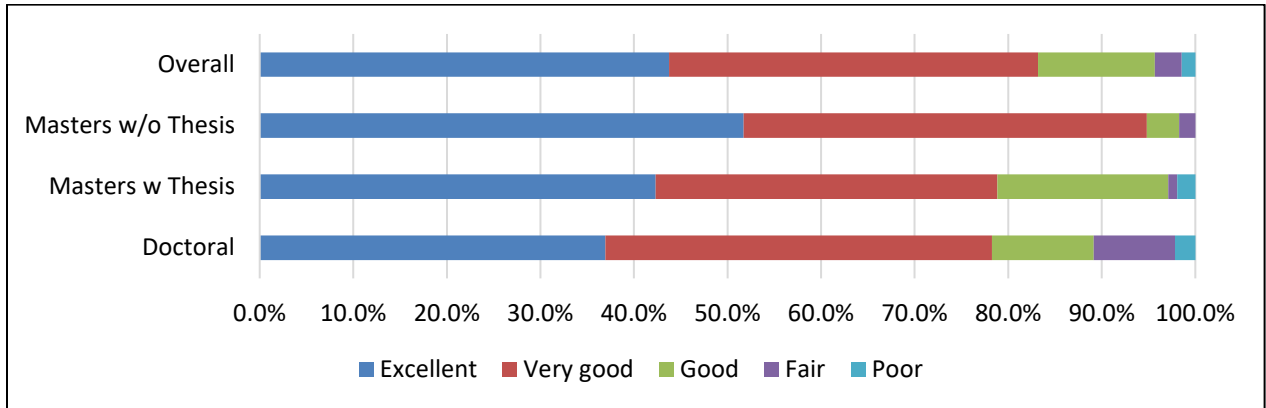


The extent to which the following factors are an obstacle to your academic progress:

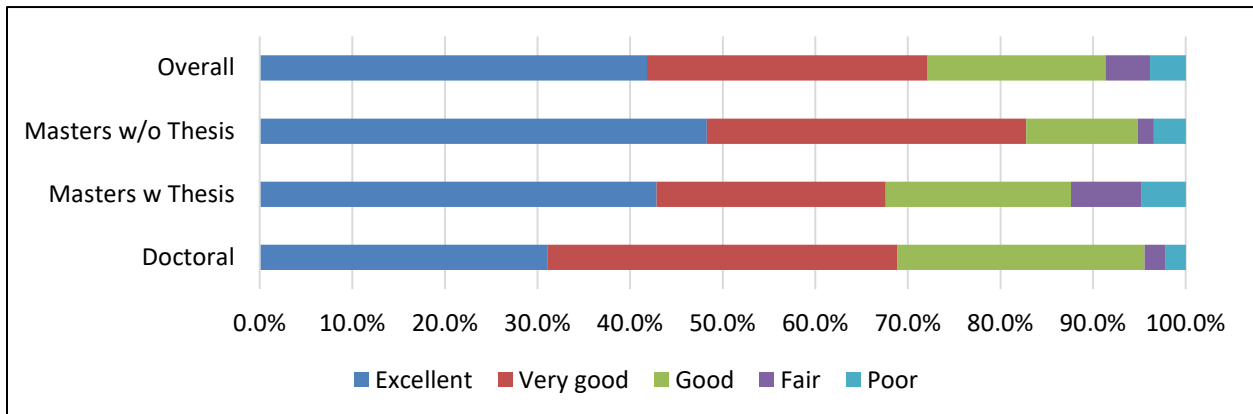


Section 4 – Program Satisfaction

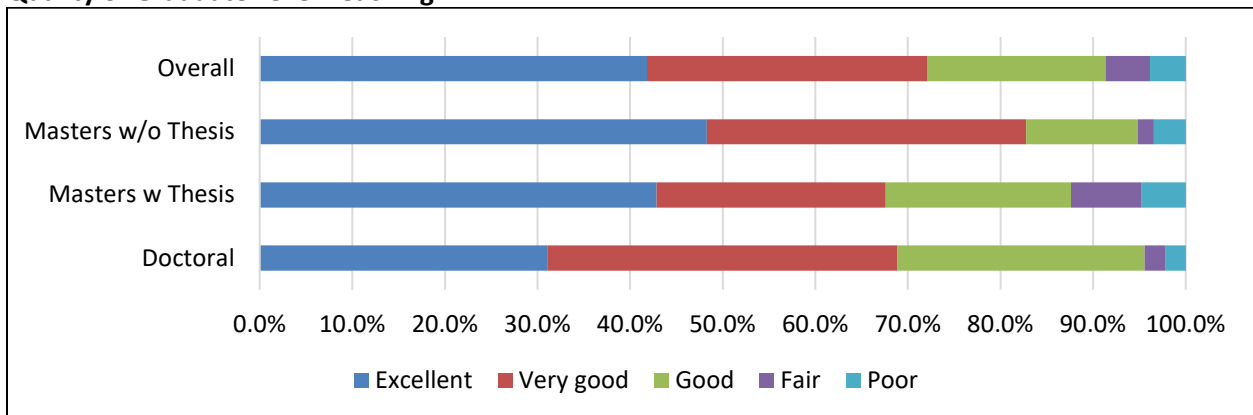
The intellectual quality of the faculty



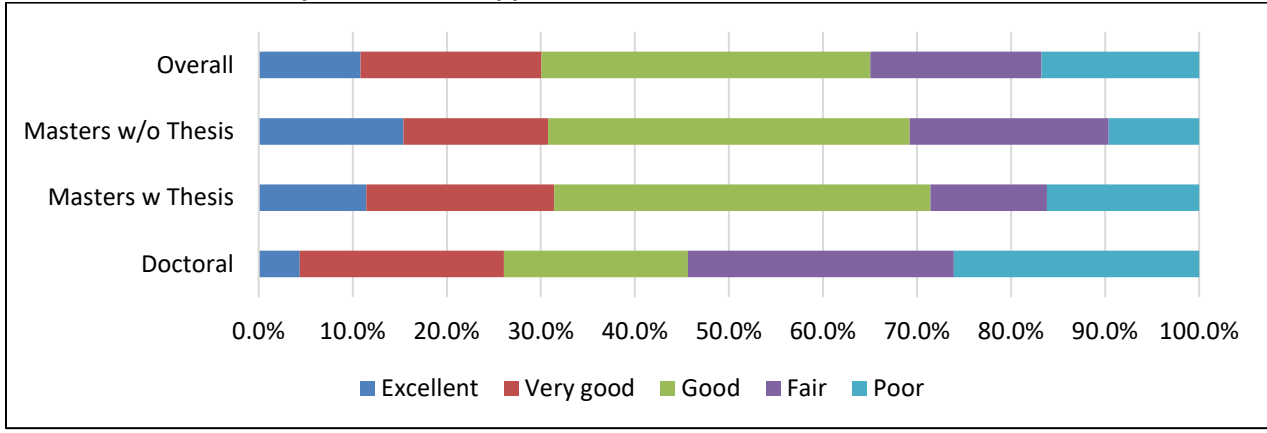
Relationship between Faculty and Students



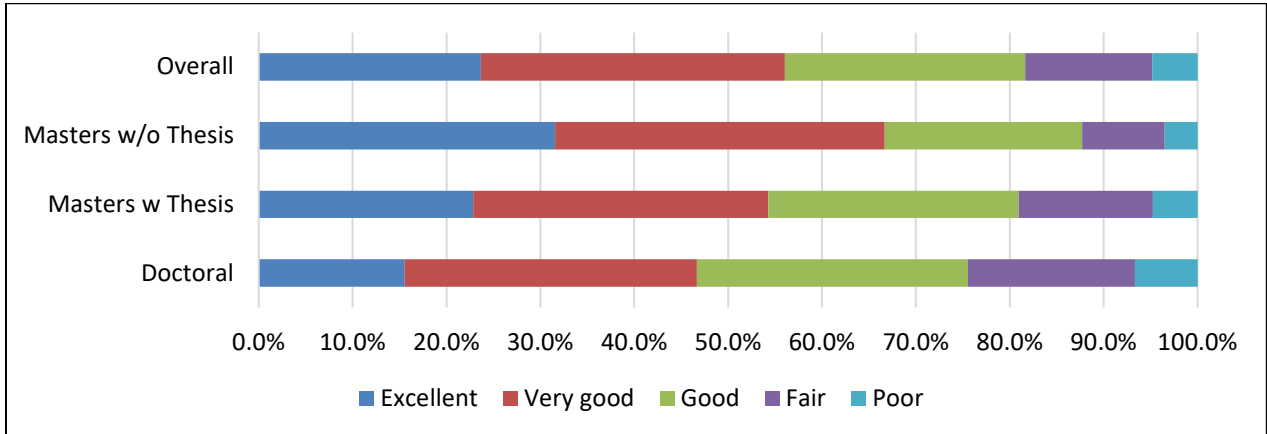
Quality of Graduate Level Teaching



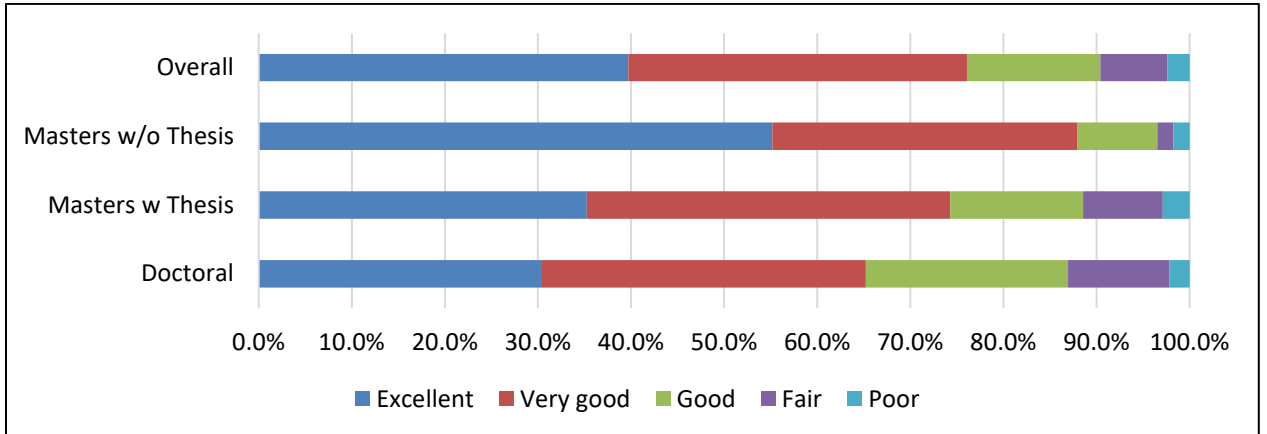
**Advice on the availability of Financial Support**



**Quality of Academic Advising and Guidance**

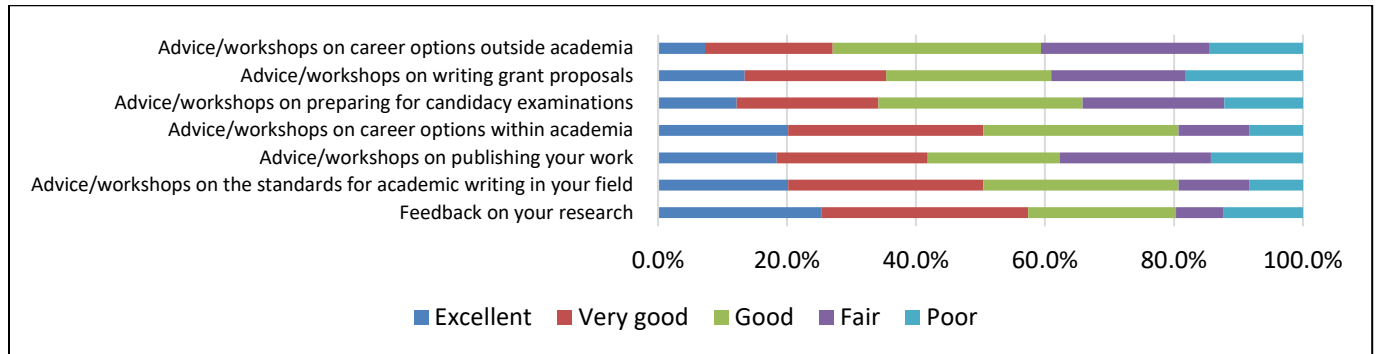


**Helpfulness of Staff**



**Section 5 – Professional Skills Development**

**How would you rate the quality of the support and training you received in these areas? (Doctoral and Masters w Thesis only)**

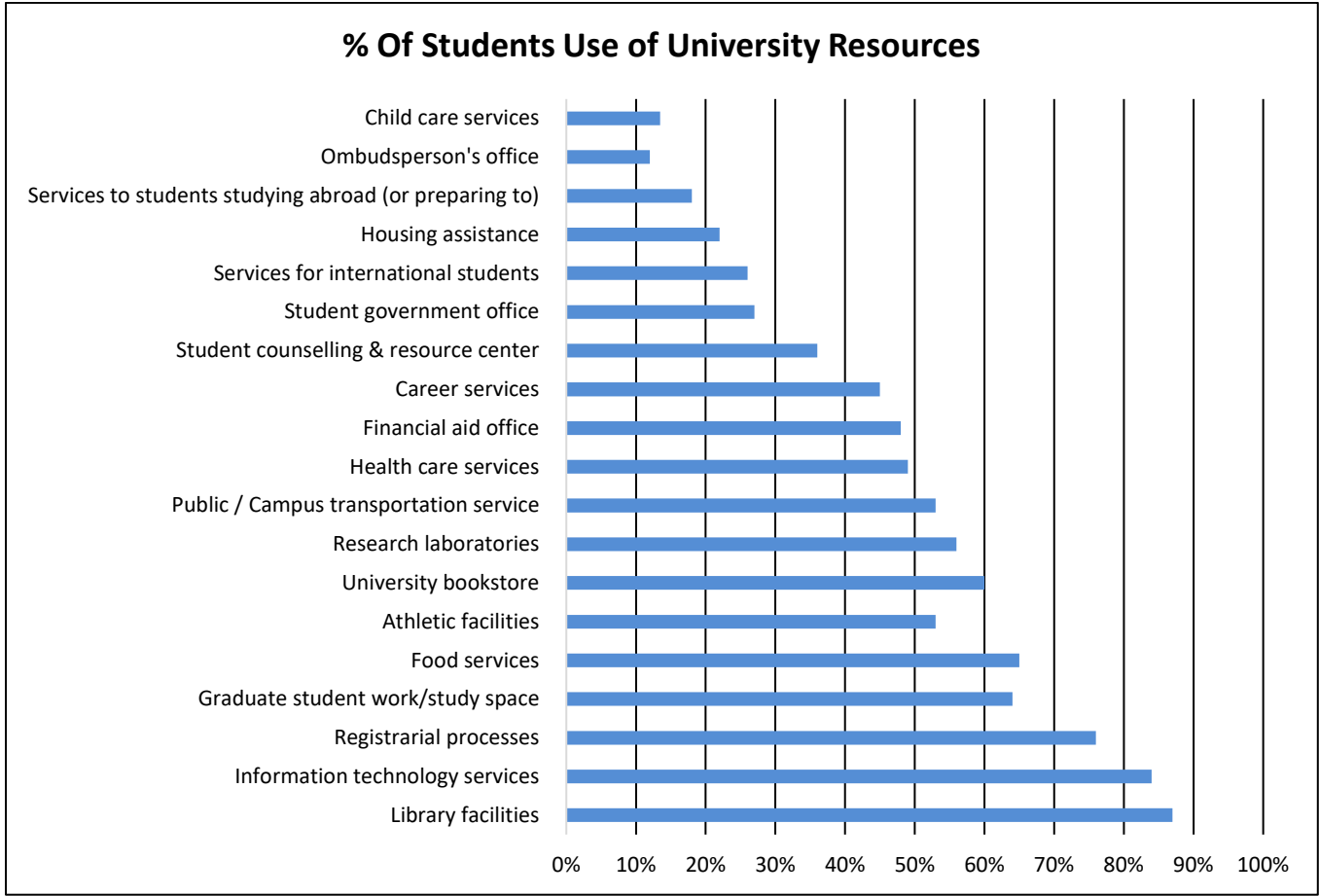


**Section 6 – Financial**

**Estimated the amount of educational debt, if any, you will have to repay when you have completed your graduate degree here.**

Debt	UG	GR
\$0	64.8%	46.2%
\$1 - \$9,999	8.2%	18.1%
\$10,000 - \$19,999	6.6%	17.6%
\$20,000 - \$29,999	8.8%	9.3%
\$30,000 - \$39,999	6.6%	2.2%
\$40,000 - \$49,999	2.2%	2.2%
\$50,000 - \$59,999	1.6%	1.6%
\$60,000 - \$69,999	1.1%	1.6%
\$70,000 - \$79,999	0.0%	0.0%
\$80,000 or more	0.0%	1.1%

Section 7 - University Resources





Please rate the following university resources based on the quality you have experienced while using them.

